

4.023 Architecture

Design Studio I:

Forming Feasts



TOR EIGELAND

Latifa Alkhayat INSTRUCTOR

Cherie Abbanat C-I-H INSTRUCTOR

Tanya Estrina TEACHING ASSISTANT

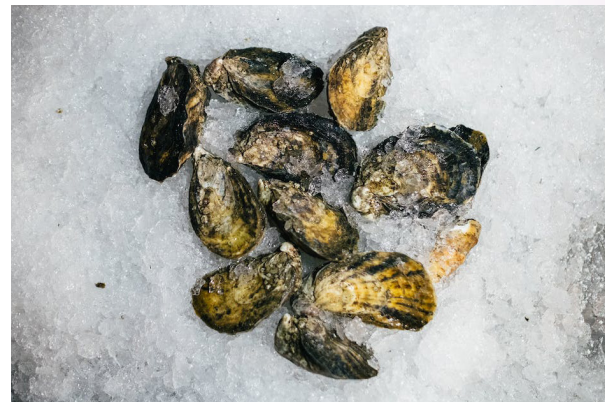
UG 4.023 Architecture Design Studio 1

Class Days: Tuesday, Thursday & Friday (1-5PM)
(Fridays will vary; this time is reserved for class work)
Studio 7-434
0-12-12U (24 units; prerequisite: 4.022)
Latifa Alkhayat - latifa@mit.edu
Cherie Miot Abbanat- abbanat@mit.edu
Tanya Estrina- testrina@mit.edu

In 4.023 Architecture Design Studio I, students will study rituals of dining, culminating in a comprehensive exercise in **spatial, material and programmatic** design. Demonstrating the diverse forms that dining can manifest, the studio will encourage each student to embark on a **design exploration that begins with the elemental consideration of ingredients and materials and extends to the realm of spatial design.**

4.023 embraces the tactile and experiential dimensions of dining, offering students the opportunity to explore intricacies from the individual's sensory encounter to the collective communal potential of the program.

Throughout the course, a wide array of design tools and representation methods will be employed, spanning drawing techniques to photography and fabrication. A series of lectures, workshops and site visits will be held to engage students in dialogues on spaces for gathering, making and consuming.



DEANE BAYAS

MIT ARCHITECTURE

FALL 2023

FORMING FEASTS

4.023 ARCHITECTURE DESIGN STUDIO I



TAKESHI HOSAKA

A series of guided design and representation exercises will lead up to a contextualised proposition, with each scale influencing the next.

Scale Sequence

0 InsideOut

1 Meal

2 Surface

3 Space

4 Building



DARYA SANNIKOVA
MAX PIXEL



Written and Oral Communication

As part of the design process, students will be required to communicate their design ideas/concepts/ theses, in writing. Students will produce 1-2-page project descriptions expressing their design intentions throughout the semester. Cherie will hold writing sessions with you one-on-one and as a group to help you focus on and improve the clarity of your writing. These writing exercises will be timed before major reviews to help you structure their presentations. Feedback will be provided continuously throughout the semester.

Cherie will hold 2-3 workshops on communication strategies for writing and presenting. Seminars will be held during regular studio hours and each session will be approximately 30 mins. These workshops are designed to prepare students for their formal review presentations.

MIT ARCHITECTURE

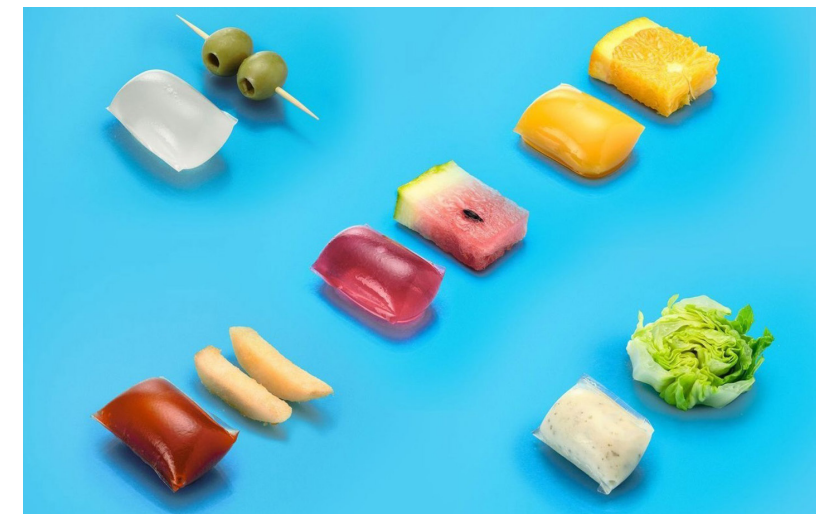
FORMING FEASTS

FALL 2023

4.023 ARCHITECTURE DESIGN STUDIO I

Pedagogical Learning Objectives

1. Understand scale, from object to landscape.
2. Discern clear and relevant representation to communicate through diagram, plan, section, axonometric, perspective, photography and models.
3. Form-making; physical and digital to express meaning through material and fabrication process..
4. Consider the experiential narrative of interacting with a space(s), with attention to environmental conditions such as day lighting.
5. Design iteratively for dichotomies like interior/exterior, public/private.
6. Design for circulation, adjacencies and connected programs.
7. Design a building within in its urban context.
8. Strengthen verbal and written communication skills.



NOTPLA

*workshop/talk dates subject to change

Schedule Sequence

MIT ARCHITECTURE

FALL 2023

FORMING FEASTS

4.023 ARCHITECTURE DESIGN STUDIO I

| 4.023 Forming Feasts | | | | |
|---------------------------|--------|--------------|----------------------------|--------------------------------|
| Design Exploration | | | | |
| Week | Dates | Brief | Notes | Presentation |
| Week 1 | | | | |
| INTRO // PRECEDENT | | | | |
| PRECEDENT | Thurs | Sep 7 | Introductions | Warm Up |
| | Fri | Sep 8 | Precedent Exercise | Assigning Precedents |
| Week 2 | | | | |
| PRECEDENT // MEAL | | | | |
| PRECEDENT | Tues | Sep 12 | Desk Crits | Model Support |
| | Thurs | Sep 14 | Precedent Pin-Up | Present Models |
| | Fri | Sep 15 | Workshop + Meal Intro | Drawings |
| Week 3 | | | | |
| MEAL | | | | |
| MEAL | Tues | Sep 19 | Desk Crits | Meal Drawing Development |
| | Thurs | Sep 21 | Desk Crits+ Workshop/Talk | Meal Drawing Development |
| | Fri | Sep 22 | Student Holiday | |
| Week 4 | | | | |
| MEAL // SURFACE | | | | |
| MEAL | Tues | Sep 26 | Desk Crits | Meal Drawing Development |
| | Thurs | Sep 28 | Meal Pin-Up | Present Meal Drawing |
| | Fri | Sep 29 | Surface Intro | Introduce Surface Exercise |
| Week 5 | | | | |
| SURFACE | | | | |
| SURFACE | Tues | Oct 3 | Desk Crits | Surface Development |
| | Thurs | Oct 5 | Desk Crits + Workshop/Talk | Surface Development |
| | Fri | Oct 6 | Desk Crits | Surface Development |
| Week 6 | | | | |
| PROGRAM SEQUENCE | | | | |
| SURFACE | Tues | Oct 10 | Student Holiday | |
| | Thurs | Oct 12 | Surface Pin-Up | Present Surface Design |
| | Fri | Oct 13 | Space Intro | Sequence & Program Development |
| Week 7 | | | | |
| PROGRAM SEQUENCE | | | | |
| PROGRAM-SPACE | Tues | Oct 17 | Desk Crits | Sequence & Program Development |
| | Thurs | Oct 19 | Desk Crits | Sequence & Program Development |
| | Fri | Oct 20 | Kitchen Visit | Sequence & Program Development |
| Week 8 | | | | |
| PROGRAM SEQUENCE | | | | |
| PROGRAM-SPACE | Tues | Oct 24 | Desk Crits | Sequence & Program Development |
| | Thurs | Oct 26 | Desk Crits | Sequence & Program Development |
| | Fri | Oct 27 | Desk Crits | Sequence & Program Development |
| Week 9 | | | | |
| MID REVIEW WEEK | | | | |
| PROGRAM-SPACE | Tues | Oct 31 | Mid Review | Present Project Development |
| | Thurs | Nov 2 | Site Analysis Introduction | Research remotely |
| | Fri | Nov 3 | Site Visit | Observations |
| Week 10 | | | | |
| SITE | | | | |
| PROGRAM-BUILDING | Tues | Nov 7 | Desk Crits | Design Development |
| | Thurs | Nov 9 | Desk Crits | Design Development |
| | Fri | Nov 10 | Student Holiday | |
| Week 11 | | | | |
| DESIGN DEVELOPMENT | | | | |
| PROGRAM-BUILDING | Tues | Nov 14 | Desk Crits | Design Development |
| | Thurs | Nov 16 | Desk Crits | Design Development |
| | Fri | Nov 17 | Workshop/Talk | Design Development |
| Week 12 | | | | |
| DESIGN DEVELOPMENT | | | | |
| PROGRAM-BUILDING | Tues | Nov 21 | Desk Crits | Design Development |
| | Thurs | Nov 23 | Student Holiday | |
| | Fri | Nov 24 | Student Holiday | |
| Week 13 | | | | |
| DESIGN DEVELOPMENT | | | | |
| DESIGN DEVELOPMENT | Tues | Nov 28 | Desk Crits | Design Development |
| | Thurs | Nov 30 | Desk Crits | Design Development |
| | Fri | Dec 1 | Workshop/Talk | Design Development |
| Week 14 | | | | |
| DESIGN DEVELOPMENT | | | | |
| DESIGN DEVELOPMENT | Tues | Dec 5 | Desk Crits | Drawing Development |
| | Thurs | Dec 7 | Pin-Up | Present Drawing Drafts |
| | Fri | Dec 8 | Desk Crits | Drawing Development |
| Week 15 | | | | |
| DESIGN DEVELOPMENT | | | | |
| DESIGN DEVELOPMENT | Tues | Dec 12 | Drawing Desk Crits | Drawing Development |
| | Thurs | Dec 14 | Drawing Desk Crits | Drawing Development |
| | Fri | Dec 15 | Drawing Desk Crits | Drawing Development |
| Week 16 | | | | |
| FINAL REVIEW WEEK | | | | |
| Monday | Dec 18 | Final Review | | |

Evaluation

The final grade will represent the balance of attendance, verbal participation, and engagement in discussions, completion assignments and the quality of work produced in the studio. The grading will include individual growth over the semester. There will be an emphasis on clarity and originality. Students will be asked to give permission for MIT to share and publish their work. Students will be asked to submit their work as a grading requirement for MIT.

20% Pin ups

20% Mid Review

20% Final Presentation

20% Writing and Oral presentations

20% Participation, assignments, effort and improvement over the course of the semester.

Criteria and Grading

1. How clearly are you articulating your conceptual intentions?
2. How well are you using your concept to develop a spatial and architectural response to given problems?
3. How accomplished are you with drawing, modeling, digital representation? To what degree do your representations convey your intentions to an audience?
4. How clearly are you presenting your ideas orally, whether at your desk, in class discussions, or to a more formal jury?
5. How actively and how constructively are you involved in class discussions, both formally and informally?
6. How do you effectively take advantage of criticism from instructors, your classmates and outside jurors?
7. To what extent are you able to critique your own work regularly and effectively?
8. How generous are you in sharing tips and ideas with classmates?

MIT ARCHITECTURE

FALL 2023

FORMING FEASTS

4.023 ARCHITECTURE DESIGN STUDIO I

Communication with Your Professors

Communication is essential to a healthy studio process. Students are encouraged to reach out to faculty at any time for questions or issues. Please do not hesitate to reach out to the professors and the TA should you have any suggestions or concerns.

Latifa Alkhatat - latifa@mit.edu

Cherie Miot Abbanat- abbanat@mit.edu

Tanya Estrina- testrina@mit.edu

Disabilities

If you have a documented disability, or any other problem you think may affect your ability to perform in class, please see me early in the semester so that arrangements may be made to accommodate you. For MIT's policy on accommodations for disabilities, please follow this link <http://mit.edu/uap/sds/students/>

Academic Integrity

Massachusetts Institute of Technology students are here because of their demonstrated intellectual ability and because of their potential to make a significant contribution to human thought and knowledge. At MIT, students will be given unusual opportunities to do research and undertake scholarship that will advance knowledge in different fields of study. Students will also face many challenges. It is important for MIT students to become familiar with the Institute's policies